

# NIAGARA-ON-THE-LAKE SAILING CLUB



The organizing authority is the  
Niagara-on-the-Lake Sailing Club (NOLSC)

## 2020 Sailing Instructions

**For the Wednesday Practice Race, Great Laker Series and Brox Company 1812 Series**

### 1 RULES

- 1.1 The series will be governed by the rules as defined in *The Racing Rules of Sailing*.
- 1.2 Prescriptions of [Sail Canada](#) will apply.
- 1.3 When racing PHRF, a boat shall follow the PHRF-Lake Ontario (PHRF-LO) rules.
- 1.4 When racing one-design, a boat shall follow the rules of her class.
- 1.5 Best practices to avoid the spread of COVID-19, as outlined by the Ontario Government and the Niagara Region Public Health Department, shall be followed prior to, during and after the races.

### 2 NOTICES TO COMPETITORS

Notices to competitors will be posted at the *2020 Amendments and Official Notice Board* link on *Racing at the Club* page of the NOLSC website <https://niagaraonthelakesailingclub.com/#racing>.

### 3 CHANGES TO SAILING INSTRUCTIONS

Any change to the sailing instructions will be posted before 0900 on the day it will take effect, except that any change to the schedule of races will be posted by 2000 on the day before it will take effect.

### 4 SIGNALS MADE ASHORE

- 4.1 Signals made ashore will be displayed at the flagpole nearest to the riverfront at NOLSC.
- 4.2 When flag AP is displayed ashore, “1 minute” is replaced with “not less than 45 minutes” in the race signal AP.

### 5 SCHEDULE OF RACES

#### 5.1 Practice Race and Great Laker Series:

- (a) Dates of Racing (all are Wednesdays):
  - (i) Wednesday Practice Race; July 29
  - (ii) Great Laker Series; August 5, 12, 19 and 26
- (b) The scheduled time of the warning signal for the first race is 1840,
- (c) For PHRF one race is scheduled to be run each day,
- (d) For Sharks two races are scheduled to be run each day.
- (e) No warning signal will be made after 1950.

#### 5.2 Brox Company 1812 Series:

- (a) Dates of Racing (all are Wednesdays) are September 2, 9 and 16
- (b) The scheduled time of the warning signal for the first race is 1830,.
- (c) One race is scheduled to be run each day.

### 6 CLASS AND IDENTIFICATION FLAGS

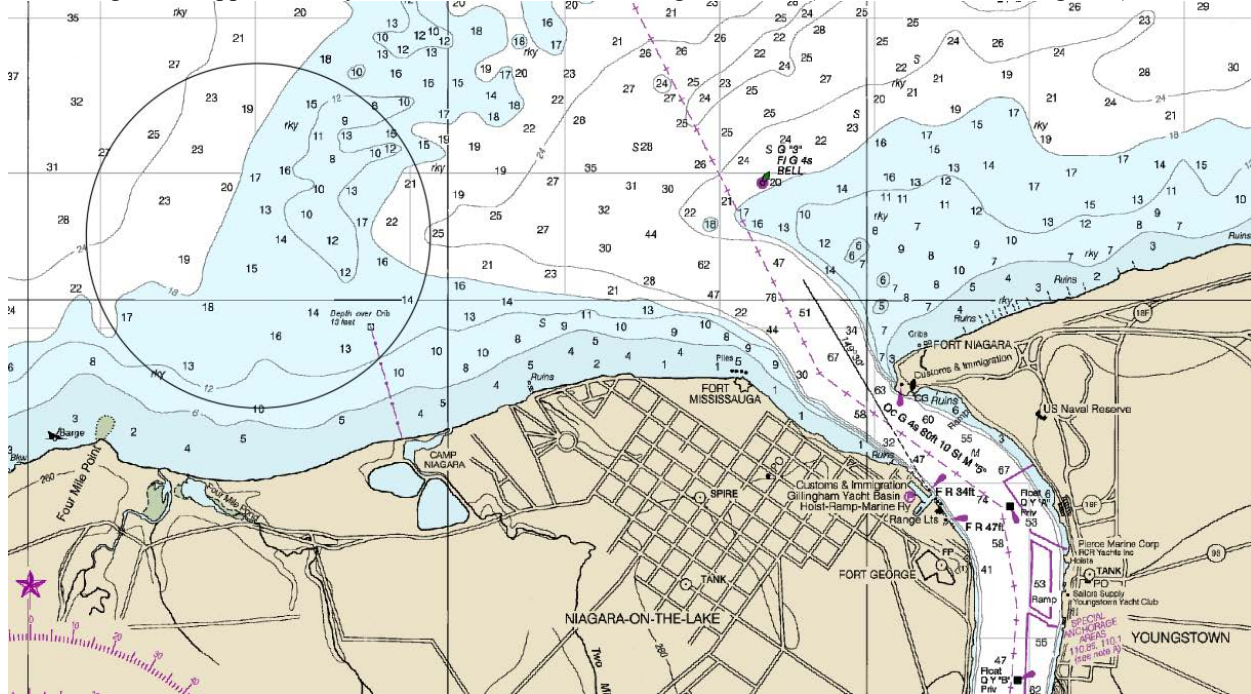
#### 6.1 Class flags and identification flags will be:

<i>Class</i>	<i>Class Flags</i>	<i>Identification Flag</i>
Shark	Numeral Pennant 1	None while racing one-design
PHRF	Numeral Pennant 2	Not required

## 2020 NOLSC Sailing Instructions – Wednesday Evenings

### 7 RACING AREAS

The racing area is approximately in the circle shown in the diagram below (not to be used for navigation).



### 8 THE COURSES

- 8.1 The diagrams in Attachment A show the courses, including the approximate angles between legs, the order in which marks are to be passed, and the side on which each mark is to be left.
- 8.2 No later than the warning signal, the race committee will display the course signal as indicated on Attachment A.
- 8.3 The Shark course will be displayed in the upper part of the course board.
- 8.4 The PHRF course will be displayed in the lower part of the course board.

### 9 MARKS

- 9.1 Mark 1a (Sharks) will be an orange inflatable tetrahedron.
- 9.2 Mark 1b (PHRF) will be a yellow inflatable tetrahedron.
- 9.3 Marks 2 will be an orange inflatable tetrahedron.
- 9.4 The race committee vessel will be *Empress of Patagonia*. Substitution of the race committee vessel will be announced on VHF 69. Failure to make this communication will not be grounds for redress.
- 9.5 The starting marks will be the race committee vessel and a red inflatable tetrahedron.

### 10 THE START

- 10.1 The starting line will be a staff displaying an orange flag on the race committee vessel and and the course side of the starting mark.
- 10.2 Boats whose warning signal has not been made shall avoid the starting area during the starting sequence for other classes. [DP]
- 10.3 The starting sequence will typically follow the class sequence in 6.1 above. Failure of the race committee to follow that sequence will not be grounds for redress.
- 10.4 More than one class may be started at one time.
- 10.5 A boat starting later than 4 minutes after her starting signal will be scored Did Not Start without a hearing. This changes RRS A4 and A5.

### 11 CHANGE OF THE NEXT LEG OF THE COURSE

A course change will be verbally announced on VHF 69. This changes RRS 33.

## 2020 NOLSC Sailing Instructions – Wednesday Evenings

### 12 THE FINISH

The finishing line will be between a staff displaying an orange flag on the race committee vessel and the course side of the finishing mark.

### 13 TIME LIMITS

13.1 The time limit for the first boat in a class is 2 hours after the class starting signal.

13.2 Boats failing to finish within 2 hours and 30 minutes after their class starting signal will be scored Did Not Finish without a hearing. This changes RRS 35, A4 and A5.

### 14 PROTESTS AND REQUESTS FOR REDRESS

14.1 Protest forms are available at the NOLSC main office during business hours or may be downloaded from [Sail Canada Protest Form \(pdf\)](#)

14.2 The protest time limit is 1200 on the day following the race.

14.3 Protests shall be hand-delivered to the protest chair of the host club or shall be filed by e-mail to [nbehring@sympatico.ca](mailto:nbehring@sympatico.ca) with the word "PROTEST" in capital letters in the subject line.

14.4 Notices will be posted no later than 72 hours after the protest time limit to inform competitors of hearings in which they are parties or named as witnesses. Hearings will be held in the boardroom located at the southeast corner on the 2<sup>nd</sup> floor of the NOLSC clubhouse.

14.5 Notices of protests by the race committee or protest committee will be posted to inform boats under RRS 61.1(b).

### 15 SCORING

15.1 For the Great Laker Series:

(a) when fewer than 4 races have been completed, a boat's series score will be the total of her race scores.

(b) when 4 races have been completed, a boat's series score will be the total of her race scores excluding her worst score.

15.2 For the Brox Company 1812 Series:

(a) when fewer than 3 races have been completed, a boat's series score will be the total of her race scores.

(b) when 3 races have been completed, a boat's series score will be the total of her race scores excluding her worst score.

15.3 PHRF corrected times will be calculated using the "PHRF-LO Time-on-Time" method.

### 16 SAFETY REGULATIONS

A boat that retires from a race shall notify the race committee as soon as possible. [DP]

### 17 RADIO COMMUNICATION

Except in an emergency, a boat that is racing shall not make voice or data transmissions and shall not receive voice or data communication not available to all boats. [DP]

The race committee may communicate information on VHF 69. Failure to make these communications or the sequence in which they are made shall not be ground for redress.

### 18 PRIZES

A prize will be awarded to the top 3 boats in each class.

### 19 DISCLAIMER OF LIABILITY

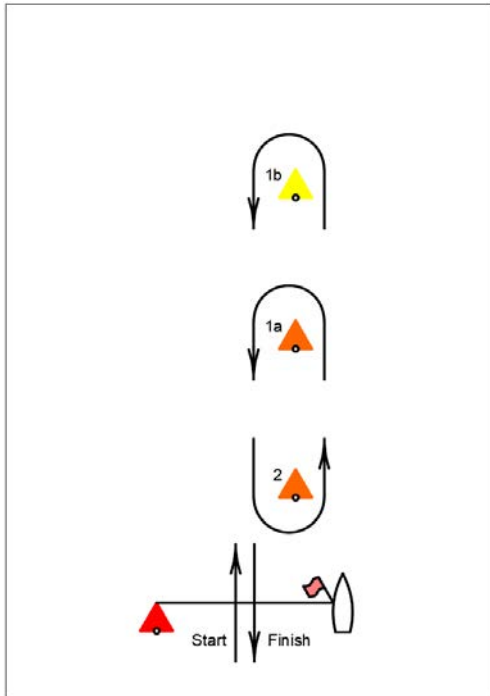
Competitors participate in the races entirely at their own risk. See RRS 4, Decision to Race. The organizing authority will not accept any liability for material damage or personal injury or death sustained in conjunction with or prior to, during, or after the regatta.

### 20 INSURANCE

Each participating boat shall be insured with adequate third-party liability insurance.

# 2020 ATTACHMENT A COURSE DIAGRAMS

**L**



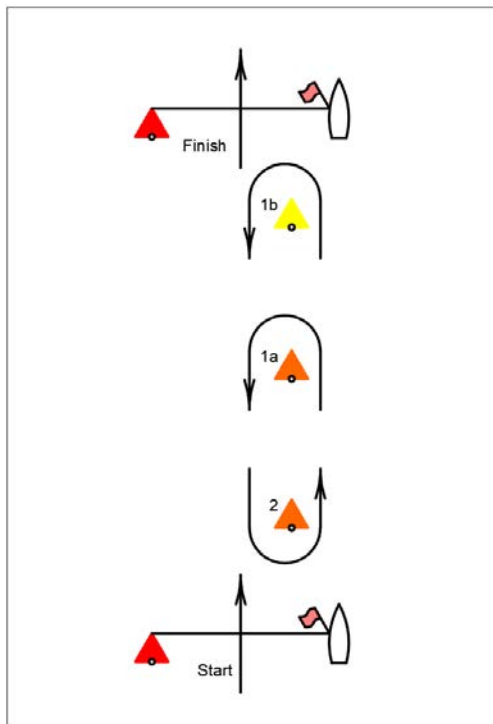
**Shark**

Course L – Windward/Leeward, Leeward Finish	
<i>Signal</i>	<i>Mark Rounding Order</i>
L2	Start-1a-2-1a-Finish
L3	Start-1a-2-1a-2-1a-Finish
L4	Start-1a-2-1a-2-1a-2-1a-Finish

**PHRF**

Course L – Windward/Leeward, Leeward Finish	
<i>Signal</i>	<i>Mark Rounding Order</i>
L2	Start-1b-2-1b-Finish
L3	Start-1b-2-1b-2-1b-Finish
L4	Start-1b-2-1b-2-1b-2-1b-Finish

**W**



**Shark**

Course W – Windward/Leeward, Windward Finish	
<i>Signal</i>	<i>Mark Rounding Order</i>
W2	Start-1a-2-Finish
W3	Start-1a-2-1a- 2- Finish
W4	Start-1a-2-1a-2b-1a-2-Finish

**PHRF**

Course W – Windward/Leeward, Windward Finish	
<i>Signal</i>	<i>Mark Rounding Order</i>
W2	Start-1b-2-Finish
W3	Start-1b-2-1b-2-Finish
W4	Start-1b-2-1b-2-1b-2-Finish